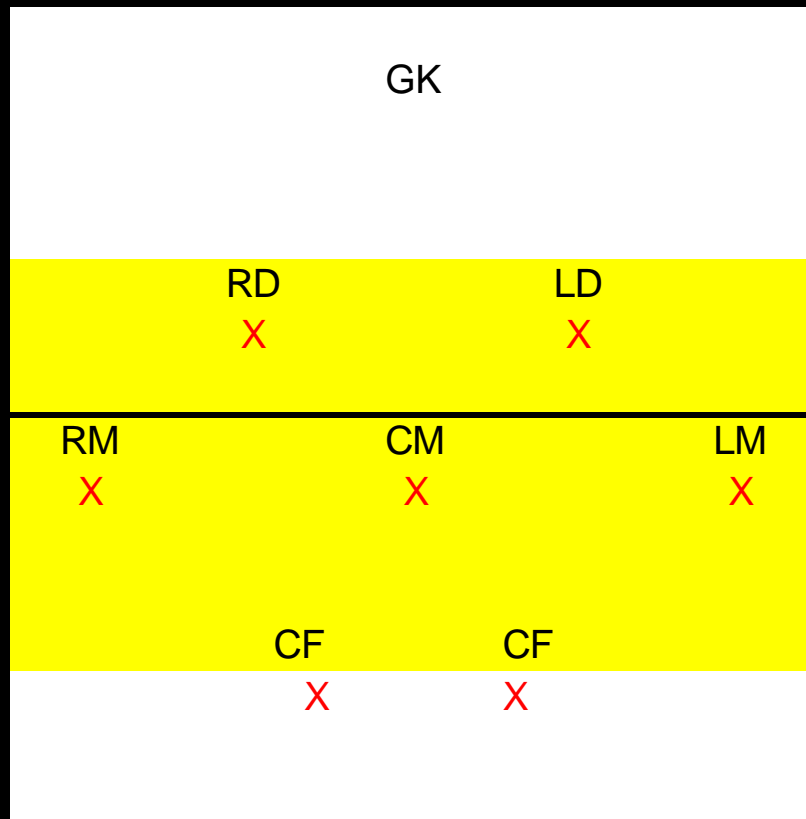


# *Playing in a 2-3-2*



- Playing against a 2-3-2
- 2 defenders
- 3 midfielders
- 2 forwards
- Mirror image on both sides of field
- Creates 2 diamonds with CM connecting both
- Allows for an easy transition to a 3-4-3

## *Key defensive factors!*

- Nearest player pressurizes the ball
  - Condense the field
- Create a larger ratio of defenders to offensive player
  - Work hard and win the Ball

# *Roles of player in Defense....*

## Goalkeeper

- Communicate with your defenders and tell them where to go and be
- Come and clear the ball outside of the box if the ball goes over our defense
- Command the whole area inside the box, from corner to corner.
- Get your body behind the ball
- Move sideways to what ever side of the field the ball is on. Even if it is at the other end of the field
- Always be in line and between the ball and the goal

# *Roles of player in Defense....*

## Right/Left Defenders

- Mark the nearest Forward to you!
- Defend as high up the field as possible. Push out at every opportunity to condense the field which will make the midfielder's job and yours much easier
- Get tight (Finger touching distance) and goal/ball side of your opposing player. When the ball is on your side
- Be in a position to intercept the ball first, challenge for the ball and tackle second and delay and wait for help third
- If the ball is on the other side of the field be in a position slightly behind your other defender, being able to cover for any mistake they make and also be able to see and be able to close down your player if the ball comes to your side or over the top of the other defender

# *Roles of player in Defense....*

## Right/Left Midfield

- Defend the Wide Midfield player when the ball is on your side
- Be in a position to intercept the ball first, challenge for the ball and tackle second and delay and wait for help third
- If the ball is on the other side of the field be in a position to cover and help out your CM player (slightly behind them) and be able to cover for the weak side defender if the ball goes all the way over them and to your side of the field. You should always be able to see the player you are marking (Wide Midfielder) and the ball

# *Roles of player in Defense...*

## Central Midfield

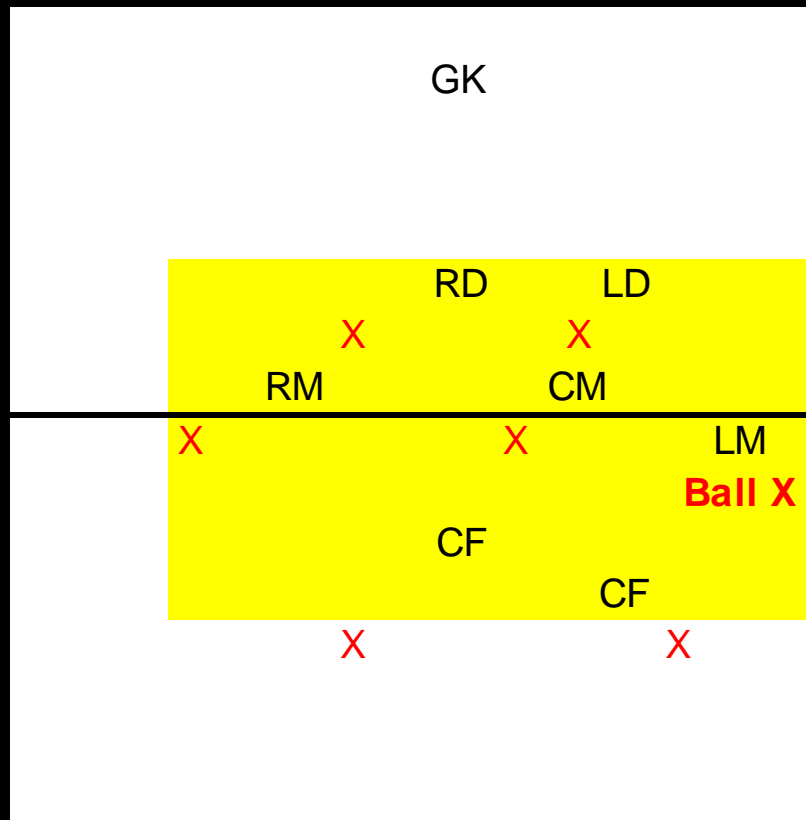
- Mark their Central Midfield player
- Be in a position to intercept the ball first, challenge for the ball and tackle second and delay and wait for help third
- Help out your forwards, midfield and defense. If the ball is at the RM position cover slightly behind them in order to help out. Same situation if the ball is at the LM position
- Always be on the side of the field and behind the ball if possible where ever the play takes you. However always try and stay pretty central

# *Roles of player in Defense....*

## Center Forwards

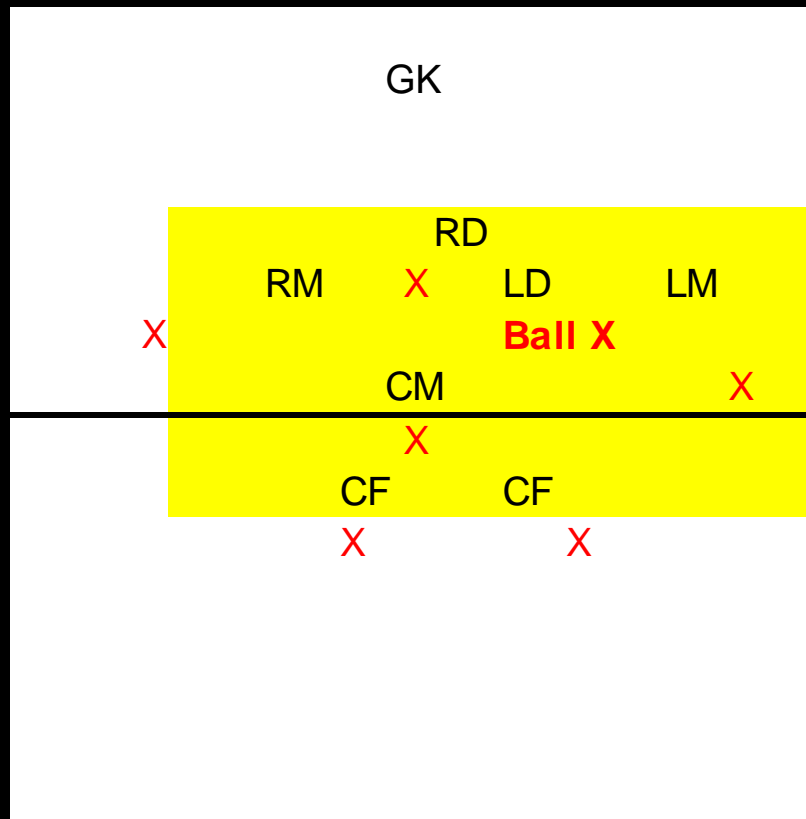
- Get goal side of the ball
- Pressurize the ball as soon as their defense gets it
- Be on the side of the field that the ball is on
- Work with your other CF. One pressures one covers in the middle slightly behind them

# *Defensive positioning....*



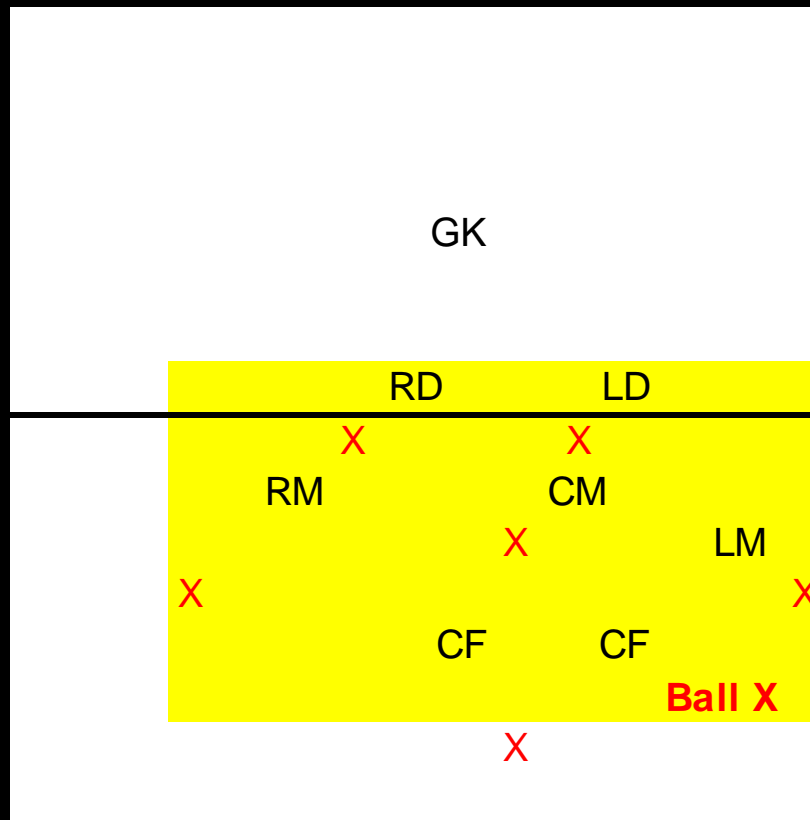
- GK positions ball side and on edge of box
- LM provides pressure on ball
- CM provides support
- LD/RD position themselves ball side and goal side of their player
- CF's eliminates drop pass
- RM creates balance, and compactness of field leaving far side open

# *Defensive positioning....*



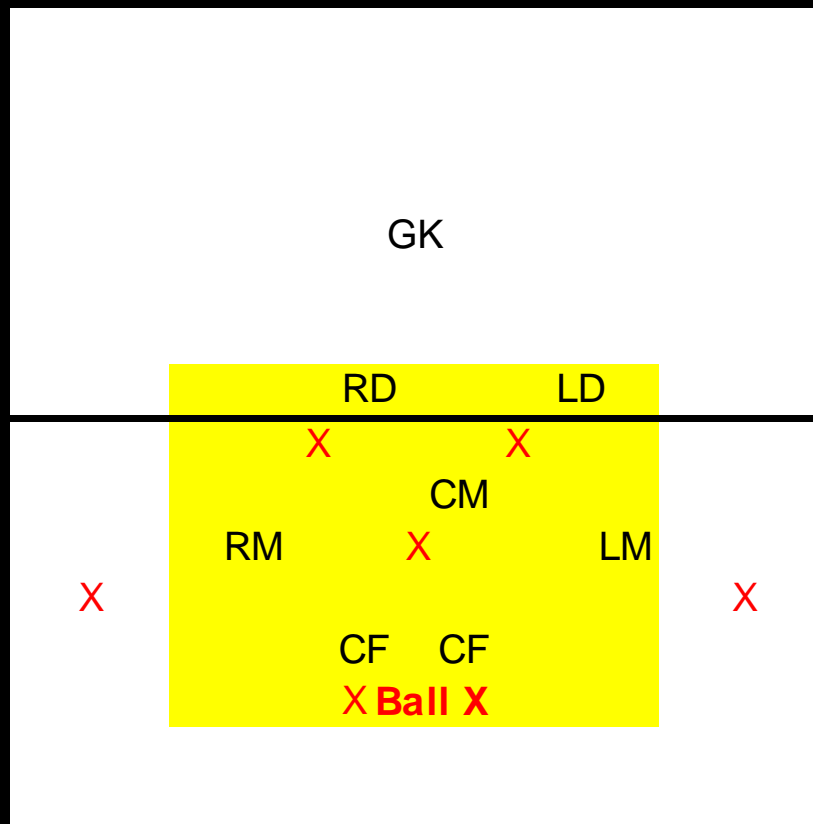
- GK positions centrally inside of box
- LD provides pressure on ball
- LM provides support
- RD provides support also and gets goal side and ball side of their player
- CM, CF's deny pass back to their players
- RM creates balance, and compactness of field leaving far side open

# *Defensive positioning....*



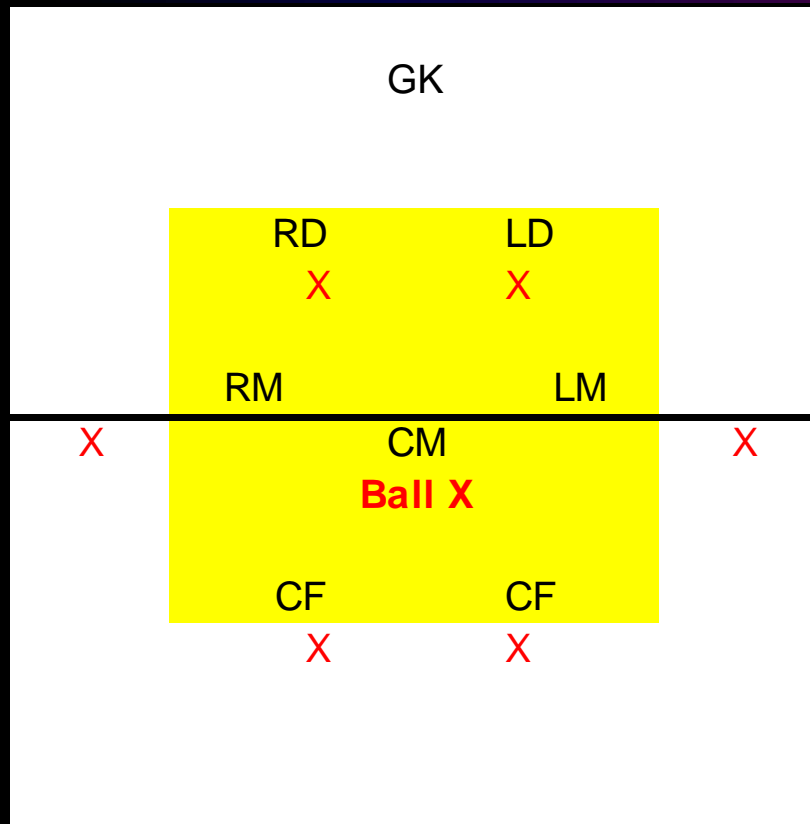
- GK positions ball side and outside of box creating a sweeper role
- CF pressures ball forcing wide
- LM/CM provide support and are goal side and ball side of their players
- RD/LD goal side and ball side pushed up to half way line
- RM creates balance, and compactness of field leaving far side open

# Defensive positioning....



- GK positions ball side and outside of box creating a sweeper role
- Nearest CF provides pressure and other CF provides support forcing ball down the middle
- RM/LM condense field and leave wide position open. Providing support for forwards also
- RD/LD goal side and ball side pushed up to half way line

# *Defensive positioning....*



- GK positions centrally inside of box
- CM provides pressure
- RM/LM provide support
- RD/LD goal side and ball side

## *Key Offensive factors!*

- Composure on the ball
- Create good support for the player on the ball
- Make the field as long and as wide as possible
  - Keep possession
- Create scoring opportunities!

# *Roles of player in Offense.....*

## Goalkeeper

- Start the attack!
- Try and kick or throw the ball wide to our players as quickly as possible
- If there is not a player available for the ball kick as long and as high as possible
- Be at the edge of the box when the ball is at the half way line.
- Be outside the box when the ball is in the other half of the field.  
(Play a sweeper role)

# *Roles of player in Offense....*

## Right/Left defender

- Try and receive the ball from the GK and then play the ball into our midfield or forwards
- If you do not receive the ball push out and be in a position to help your midfield

# *Roles of player in Offense.....*

## Right/Left Midfield

- Get as wide as possible as soon as we get possession of the ball
- Try and receive the ball from the GK or RD/LD as quickly as possible
- Option 1, when you have possession of the ball, take the defender on. Cross or shoot when you beat them
- Option 2, pass to your forwards/midfield or pass back to your defenders
- Be in the box if the ball is being crossed from the LM
- Shoot with every opportunity

# *Roles of player in Offense...*

## Central Midfield

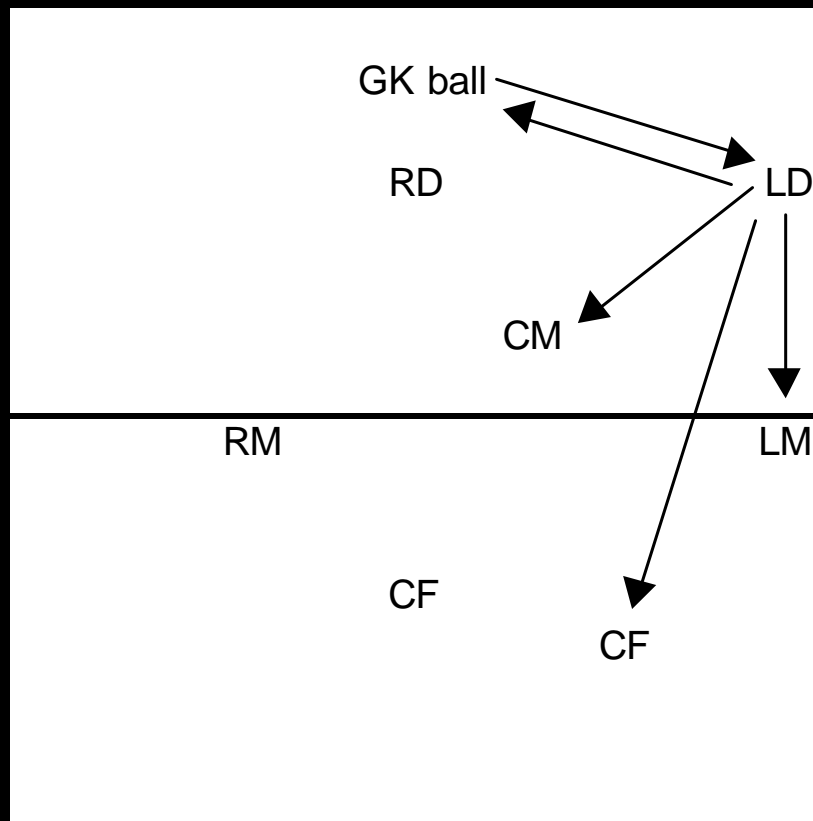
- Stay central up and down the field
- Try and be in a position to receive the ball from all our players
- Option 1, dribble the ball through midfield to open up shots for yourself
- Option 2, pass the ball out wide or to our forwards
- Be at the edge of the box when crosses or shots are being taken.
- Shoot with every opportunity

# *Roles of player in Offense.....*

## Center Forwards

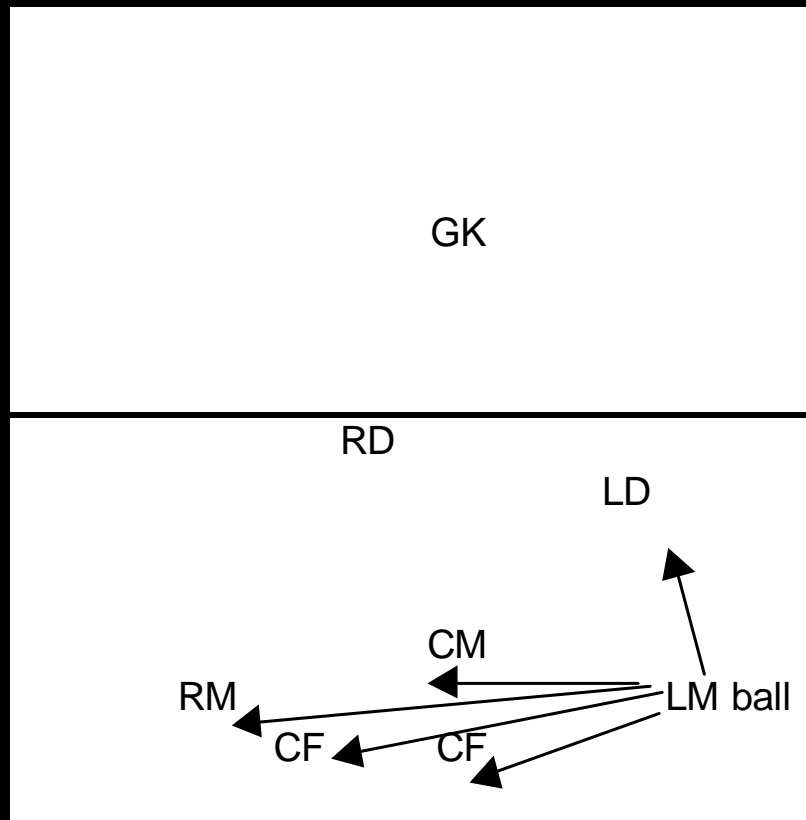
- Be in a position to receive the ball from a long kick from the GK.
- Work from side to side to receive the ball from your midfield and defenders
- Work with your other forward. One comes short to receive one goes long to receive the ball
- Always be in the box to receive the ball from our LM and RM players
- Dribble and take on players at every opportunity
- Shoot at every opportunity

# *Offensive passing options....*



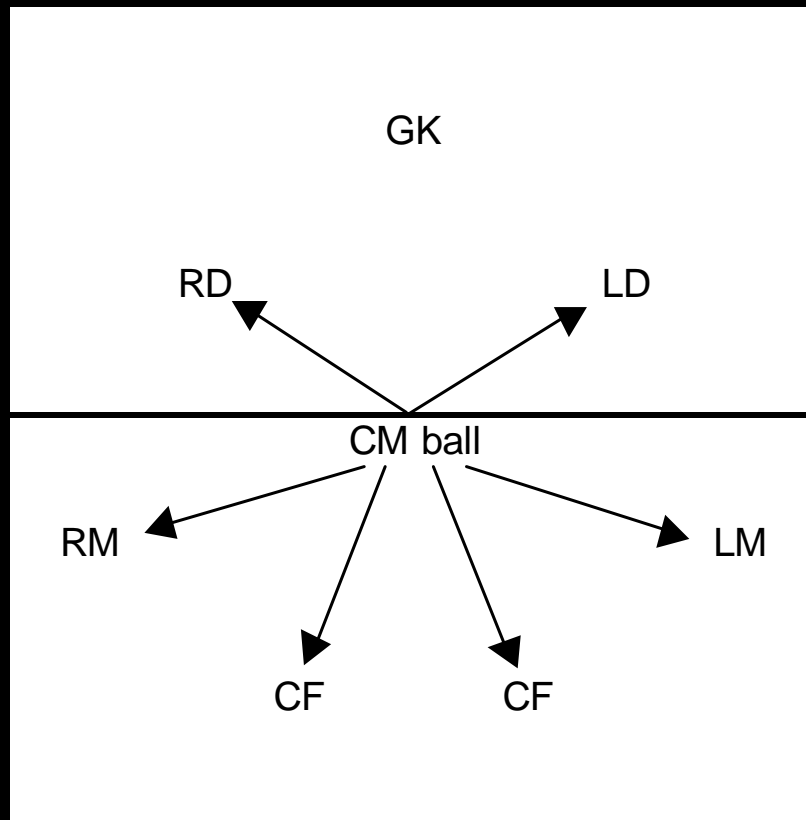
- LD receives ball from GK in defensive 3rd
- GK is in position to receive ball back if needed
- CM shows inside
- LM creates width for a pass or continues moving forward if LD dribbles ball out
- Nearest CF creates depth
- RD, RM and the other forward create balance within the team

# *Offensive passing options....*



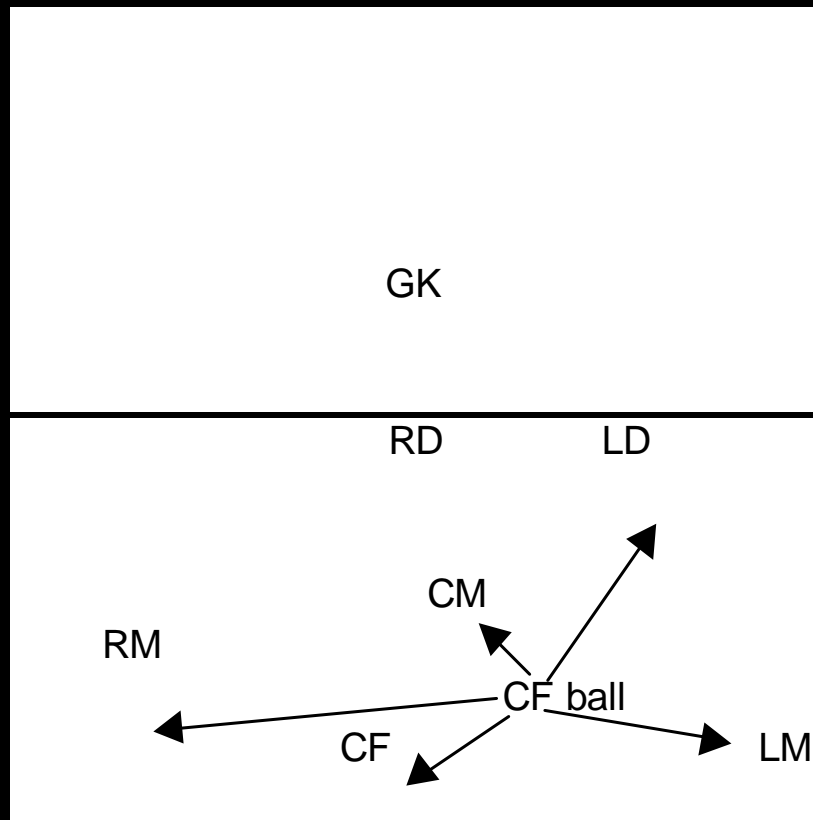
- LM has ball in offensive 3rd.
- LD positions for a drop pass
- Both CF's make runs into the box (near post and middle runs)
- CM holds run at top of box
- RM comes in at the weak side of the box (far post runs)

# *Offensive passing options....*



- CM receives ball in middle 3rd. (The connection for every position on the field)
- All players should be available to receive a pass and create options for the CM player
- RM/LM create width
- CF create depth

# *Offensive passing options....*



- CF receives ball in offensive 3rd
- Opposite forward supports for a combination or makes a forward penetrating run
- CM and LD support the CF behind the ball
- RM/LM create width